

# Yield Book Q | Index

Custom index solutions

**A powerful easy-to-use tool that allows users to quickly research and analyze index ideas, back-test potential new indexes, and can help generate results.**

Yield Book Q houses a robust index solutions tool tailored to meet the needs of asset owners, asset managers, and investment consultants. The platform's intuitive user interface offers a comprehensive index repository, a wealth of customization features, and speed to market capabilities to create indexes that meet the most complex portfolio mandates.

30+

years of experience in benchmarking

100+

countries covered in our extensive database

70,000+

unique main and sub-indexes

## Research and Prototype Index Concepts

**Define** universe by sector, geography, industry, maturity, rating

**Specify** sectors, issuers, or issues

**Include** index blends, user-defined sectors and more

**Apply** subordination by seniority/ tiered capital filters

**Modify** index weighting methodologies

**Enforce** capping and flooring to achieve diversification

**Minimize** foreign exchange risks with currency hedging

## Analyze and Publish Results

**Perform** historical back tests

**Compare** simulations

**Automate** reporting

**Download** results

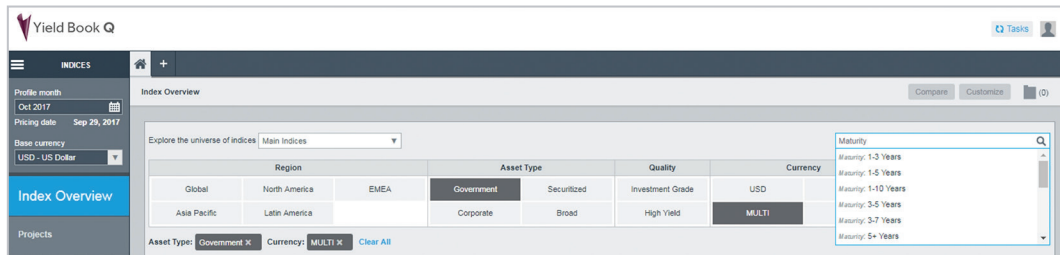
**Share** index concepts

**License an Index.** Our indexes may be licensed for use as underlying indexes for OTC or exchange traded products. Leading financial institutions rely on these indexes for the creation of their index-based investment products.

**Receive Outstanding Support.** Unwavering client commitment has driven our business since its inception. We put our clients in control with tools that work for them and provide them with the highest level of personalized service.

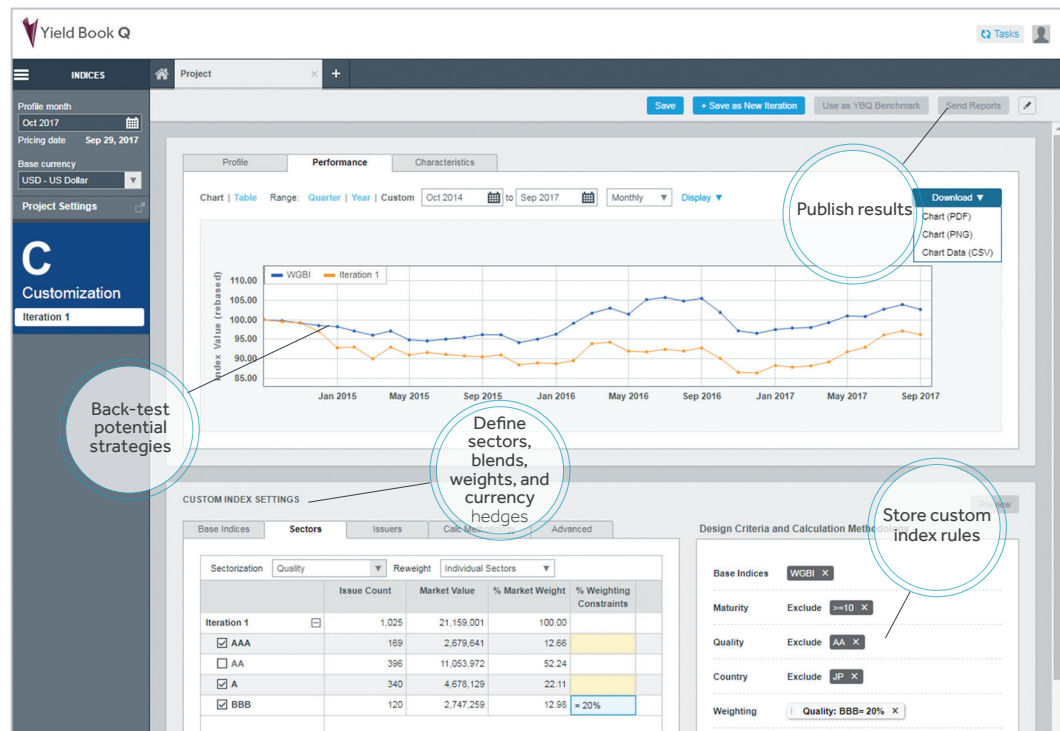
## Search Intuitively.

Navigate through a comprehensive database of indexes using a filter selection and a familiar predictive search feature.



## Readily Turn Ideas into Solutions.

Designed around the investment process, the intuitive user-interface enables users to hit the ground running to simulate historical performance of custom indexes.



Source: FTSE Russell. For illustrative purposes only.

For more information, contact us at [sales@yieldbook.com](mailto:sales@yieldbook.com) or visit our website: [www.yieldbook.com](http://www.yieldbook.com)

**Americas**  
+1 213 239 1464

**Europe**  
+40 20 7334 8962

**Asia Pacific**  
+852 2164 3288, +65 6818 6291

**Japan**  
+81 3 4563 6346

© 2018 London Stock Exchange Group plc and its applicable group undertakings (the "LSE Group"). The LSE Group includes (1) FTSE International Limited ("FTSE"), (2) Frank Russell Company ("Russell"), (3) FTSE Global Debt Capital Markets Inc. and FTSE Global Debt Capital Markets Limited (together, "FTSE GDCM"), (4) MTSNext Limited ("MTSNext"), (5) Mergent, Inc. ("Mergent"), (6) FTSE Fixed Income LLC ("FTSE FI") and (7) The Yield Book Inc ("YB"). All rights reserved.

FTSE Russell® is a trading name of FTSE, Russell, FTSE GDCM, MTS Next Limited, Mergent, FTSE FI and YB. "FTSE®", "Russell®", "FTSE Russell®", "MTS®", "FTSE4Good®", "ICB®", "Mergent®", "WorldBIG®", "USBIG®", "EuroBIG®", "AusBIG®", "The Yield Book®", and all other trademarks and service marks used herein (whether registered or unregistered) are trademarks and/or service marks owned or licensed by the applicable member of the LSE Group or their respective licensors and are owned, or used under licence, by FTSE, Russell, MTSNext, FTSE GDCM, Mergent, FTSE FI or YB. "TMX™" is a registered trademark of TSX Inc. FTSE International Limited is authorised and regulated by the Financial Conduct Authority as a benchmark administrator.

All information is provided for information purposes only. All information and data contained in this publication is obtained by the LSE Group, from sources believed by it to be accurate and reliable. Because of the possibility of human and mechanical error as well as other factors, however, such information and data is provided "as is" without warranty of any kind. No member of the LSE Group nor their respective directors, officers, employees, partners or licensors make any claim, prediction, warranty or representation whatsoever, expressly or impliedly, either as to the accuracy, timeliness, completeness, merchantability of any information or of results to be obtained from the use of the FTSE Russell Products or the fitness or suitability of the FTSE Russell Products for any particular purpose to which they might be put. Any representation of historical data accessible through FTSE Russell Products is provided for information purposes only and is not a reliable indicator of future performance.

No responsibility or liability can be accepted by any member of the LSE Group nor their respective directors, officers, employees, partners or licensors for (a) any loss or damage in whole or in part caused by, resulting from, or relating to any error (negligent or otherwise) or other circumstance involved in procuring, collecting, compiling, interpreting, analyzing, editing, transcribing, transmitting, communicating or delivering any such information or data or from use of this document or links to this document or (b) any direct, indirect, special, consequential or incidental damages whatsoever, even if any member of the LSE Group is advised in advance of the possibility of such damages, resulting from the use of, or inability to use, such information.

No member of the LSE Group nor their respective directors, officers, employees, partners or licensors provide investment advice and nothing contained in this document or accessible through FTSE Russell Products, including statistical data and industry reports, should be taken as constituting financial or investment advice or a financial promotion.

Past performance is no guarantee of future results. Charts and graphs are provided for illustrative purposes only. Index returns shown may not represent the results of the actual trading of investable assets. Certain returns shown may reflect back-tested performance. All performance presented prior to the index inception date is back-tested performance. Back-tested performance is not actual performance, but is hypothetical. The back-test calculations are based on the same methodology that was in effect when the index was officially launched. However, back-tested data may reflect the application of the index methodology with the benefit of hindsight, and the historic calculations of an index may change from month to month based on revisions to the underlying economic data used in the calculation of the index.

No part of this information may be reproduced, stored in a retrieval system or transmitted in any form or by any means, electronic, mechanical, photocopying, recording or otherwise, without prior written permission of the applicable member of the LSE Group. Use and distribution of the LSE Group data requires a licence from FTSE, Russell, FTSE GDCM, MTSNext, Mergent, FTSE FI, YB and/or their respective licensors.