

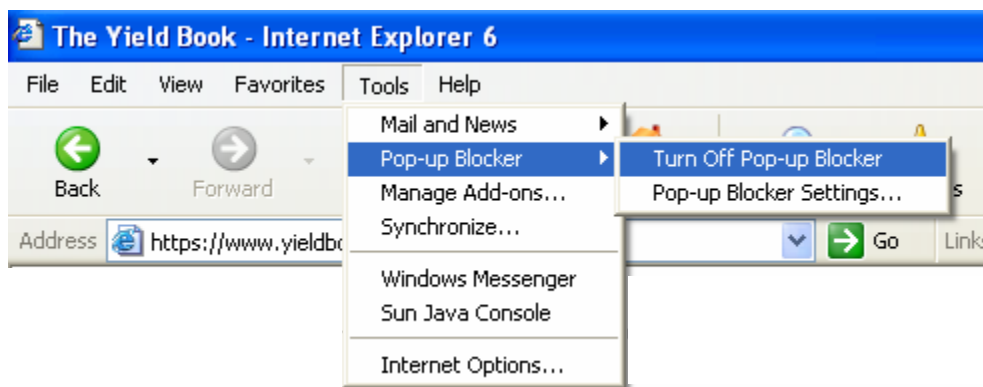


The Yield Book Inc.
388 Greenwich Street
New York, NY 10013
(212) 816-7120 SALES
(212) 816-7766 FAX
sales@yieldbook.com

NEW CALCULATOR LOGIN INSTRUCTIONS

October 2008

Turn off Pop-up Blockers before running the Calculator.



HAVE A WEBSITE PASSWORD

First Time Calculator Login

1. Go to www.yieldbook.com



2. Click on the gray button on the right for **Yield Book Calculator**
3. On the login screen, enter your email address into the **Login** box
4. Enter password into the **Enter Password** box
5. Click on **Login**

citi

Home Products About Us News Contact Us Support

Yield Book Customer Login

THE YIELD BOOK

Please Login ...

Login to Website Here

3 → Login: [What is my Login?](#)

4 → Enter Password: [Forgot Password?](#)

5 → Login Remember if I am logged in.

Problem with your Password?
If you experience difficulty with your password please call (212) 816-TECH (8324)

2 → **Yield Book Calculator**

Login with SecurID?
[Click Here](#)

New to Yield Book Products?
[Register Now](#)

Product Selection

- ▶ The Yield Book
- ▶ Batch Launcher
- ▶ Mydata
- ▶ Yield Book Calculator
- ▶ Index Data

Inside:

- [Register for Workshops](#)
- [Download Manuals](#)
- [Download and Install](#)
- [Systems Hours](#)
- [Release Highlights](#)
- [My Account](#)

The Yield Book Inc.
[Disclaimer](#)
www.yieldbook.com

A member of **citi**
[Privacy](#)
[Terms, conditions, caveats and small print](#)
Copyright © 1996-2007 The Yield Book Inc.

6. On the Legal Agreement page, read and click on **I accept and agree**.

breach or failure or delay in exercising any right, power or remedy of any provision of this Agreement shall constitute a waiver of the same or any other provision hereof with respect to prior, concurrent or subsequent occurrences and no waiver shall be effective unless made in writing and signed by an authorized representative of the party against whom enforcement of such waiver is sought.

25. This Agreement supersedes in full all prior and agreements (oral or written) between you and YBI relating to your right to use YB Calculator and constitutes the entire agreement between you and YBI relating thereto.



BY CLICKING "I ACCEPT AND AGREE TO THE TERMS OF THIS AGREEMENT" BELOW YOU, AS AN INDIVIDUAL AND ON BEHALF OF YOUR FIRM, ACKNOWLEDGE THAT YOU HAVE READ, UNDERSTAND, AND AGREE TO BE BOUND BY THE TERMS OF THIS AGREEMENT. IF YOU CLICK "I DO NOT ACCEPT" BELOW YOU WILL BE REFUSED ACCESS TO YB CALCULATOR.

6 → **I accept and agree** **I do not accept** **Print**

The Yield Book Inc. A member of Citi [Privacy](#)
[Disclaimer](#) [Terms, conditions, caveats and small print](#)
www.yieldbook.com Copyright © 1996-2007 The Yield Book Inc.

Note: After the first time you launch the Calculator, you will not see the Legal Agreement again until the software is updated.

7. On the Product Registration page, click on **Select Calculator**.

 Home | Products | About Us | News | Contact Us | Site Map | Logout 

[Support](#) | [Help](#)

Yield Book Product Registration

Thank you for registering to use Yield Book products. In the future, you will bypass the registration pages when launching an application.

7 → **Select Calculator**


Product Selection

- ▶ The Yield Book
- ▶ Batch Launcher
- ▶ Mydata
- ▶ Yield Book Calculator
- ▶ Index Data


Systems Status
Normal

The Yield Book Inc. A member of Citi [Privacy](#)
[Disclaimer](#) [Terms, conditions, caveats and small print](#)
www.yieldbook.com Copyright © 1996-2007 The Yield Book Inc.

- On the Calculator menu page, click on the gray button for **Run** to start the default choice. You can also choose an alternate Calculator from the dropdown menu or toggles.



[Home](#) | [Products](#) | [About Us](#) | [News](#) | [Contact Us](#) | [Site Map](#) | [Logout](#)



[Support](#) | [Help](#)

The Yield Book Calculator

A brand new version of the Yield Book Calculator is now available. To launch the new version, you have two choices:

Option 1: Select from the dropdown menu under "User Summary" and click [Run]
Option 2: Toggle to the "New" version under "Select Calculator License" and click [Run]

User Summary

User Name: Jayni S. Kosoff

Calculator ID: Old Calculators

Company: YBQA

	Total	In Use
Calculators	2	0

8 → Run

Select Calculator License

Yield Book Calculator ID		Calculator Type	User & Status
<input type="radio"/>	Old	Old Calculator	Old
<input type="radio"/>	New	New Calculator	New

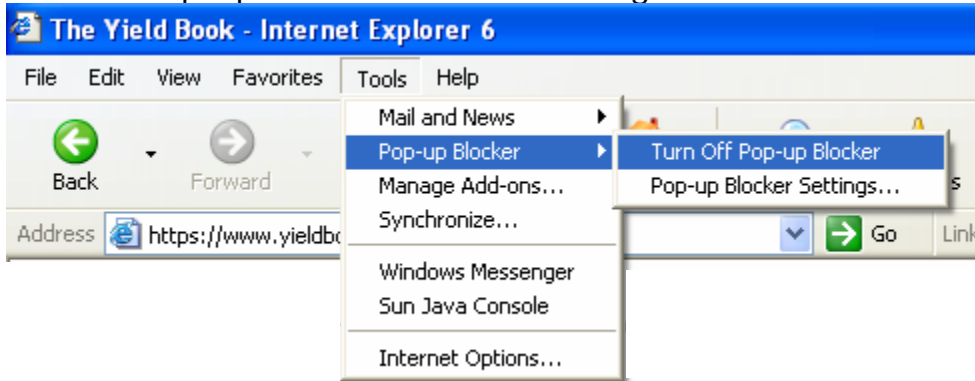
Product Selection

- ▶ The Yield Book
- ▶ Batch Launcher
- ▶ Mydata
- ▶ Yield Book Calculator
- ▶ Index Data

Systems Status
Normal

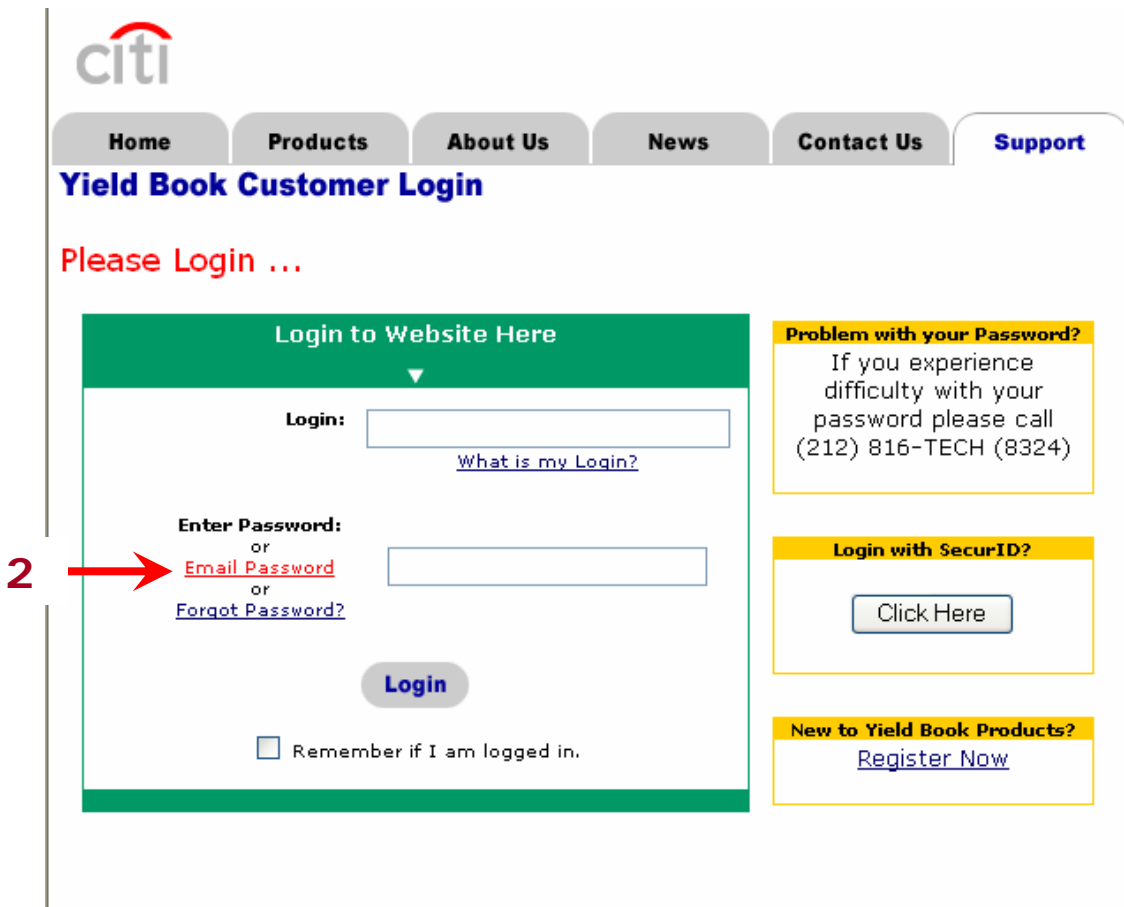
DO NOT HAVE WEBSITE PASSWORD

Turn off Pop-up Blockers before running the Calculator.



First Time Website Login

1. Go to www.yieldbook.com
2. Click on **Email Password** to request a temporary password



3. Enter your email address into the **Login** box
4. Click on **Email Password**

Request Temporary Password

3 → Login:
[What is my Login?](#)

4 → **Email Password**

Temporary Password will be E-mailed to you.

- If you need further assistance, please contact us at support@yieldbook.com or (212) 816-TECH [8324].
- Oops! I do know my Password -- [take me back to Login](#)

5. Go to your email box. Retrieve the message from login@yieldbook.com.
6. Click on the link in the message to call up a new browser window.

Temporary Access Key for www.yieldbook.com - Message (Plain Text)

From: login@yieldbook.com Sent: Wed 9/17/2008 2:20 PM
To: Kosoff, Jayni [CMB-FICC]
Cc:
Subject: Temporary Access Key for www.yieldbook.com

Thank you for using the Yield Book web server. We have assigned the Temporary Access Key mcvIiyM3" for you. To login to our web site, use the link below to change your Code Word: <https://www.yieldbook.com/x/activate?u=8d14a5028bd34cb945e3ec0347c67e4f>

If you have trouble browsing the site, please send email to: <mailto:login@yieldbook.com>

The Yield Book

7. Enter temporary password from the email in the **Temporary Password** box.
8. Enter a new password in the **New Password** and **Confirm New Password** boxes
9. Click on the gray button for **Create Password**.

My yieldbook.com Account - Establish Password

Yield Book customers access Yield Book products and support by login and password. Keep your Yield Book website account secure by changing your password and by logging off this site before exiting your browser.

Password Guidelines:

- Must be 6 characters or greater in length
- Must contain both alphabets and numerics
- Cannot contain or be same as login id
- Cannot contain more than 2 consecutive identical characters
- Can only contain alphanumeric characters

User ID: @d14a5028bd34cb945e

Temporary Password: ← 7

New Password: ← 8

[See Password Guidelines](#)

Confirm New Password: ← 8

← 9

10. On the Password Acknowledgement page, click on **HERE** to continue.

Your password has been updated

To continue click [HERE](#) ← 10

Product Selection

- ▶ The Yield Book
- ▶ Batch Launcher
- ▶ Mydata
- ▶ Yield Book Calculator
- ▶ Index Data

THE YIELD BOOK

First Time Calculator Login

11. On the Support Home Page, click on the gray button for **Yield Book Calculator**.

Home | Products | About Us | News | Contact Us | Site Map | Logout

Support Training Documentation Download Announcements My Account

THE YIELD BOOK

Welcome to Customer Support for Yield Book Products

Updates:

- 09/19/08 [Workshop Dates](#) **New**
Sign up for classes in London, Los Angeles, New York, and Tokyo.
- 09/18/08 [Intro to Bond Math Workshop](#) **New**
- 08/04/08 [Weekly Release Highlights](#) **Latest**
- 07/22/08 [Update: Lehman Index Data Subscription](#)
- 06/12/08 [Yield Book Releases Value-at-Risk Model](#)
- 06/03/08 [Special Event: Citi's New CMBS Model](#)
- 05/30/08 [Negative Duration on Floaters](#)
- 05/20/08 [Launch of the Citigroup Mexican Government Bond Index](#)
- 05/19/08 [Launch of the Citigroup World Inflation-Linked Securities Index](#)
- 04/17/08 [Launch of the Citigroup Asian Government Bond Index \(AGBI\)](#)
- 02/24/08 [New Citigroup Prepayment Model Becomes the Default on February 24, 2008](#)

11/16/07 [Access Reports](#)
A tool designed to show customers the usage generated by various Yield Book products...

11/04/07 [Yield Book Releases Value-at-Risk Model for Beta](#)

08/05/07 [Batch Launcher is here](#)
Launch batch links from the Yield Book

Product Selection

- The Yield Book
- Batch Launcher
- Mydata
- Yield Book Calculator
- Index Data

Systems Status
Alert

Customer Support

- Index**
(212) 816-0700
fi.index@citigroup.com
- Analytics/Usage**
(212) 816-2665
howto@yieldbook.com
- Tech Support**
(212) 816-8324
support@yieldbook.com
- Sales**
sales@yieldbook.com
- Billing**
billing@yieldbook.com

12. On the Legal Agreement page, read and click on **I accept and agree**.

breach or failure or delay in exercising any right, power or remedy of any provision of this Agreement shall constitute a waiver of the same or any other provision hereof with respect to prior, concurrent or subsequent occurrences and no waiver shall be effective unless made in writing and signed by an authorized representative of the party against whom enforcement of such waiver is sought.

25. This Agreement supersedes in full all prior and agreements (oral or written) between you and YBI relating to your right to use YB Calculator and constitutes the entire agreement between you and YBI relating thereto.

BY CLICKING "I ACCEPT AND AGREE TO THE TERMS OF THIS AGREEMENT" BELOW YOU, AS AN INDIVIDUAL AND ON BEHALF OF YOUR FIRM, ACKNOWLEDGE THAT YOU HAVE READ, UNDERSTAND, AND AGREE TO BE BOUND BY THE TERMS OF THIS AGREEMENT. IF YOU CLICK "I DO NOT ACCEPT" BELOW YOU WILL BE REFUSED ACCESS TO YB CALCULATOR.

12 → **I accept and agree** **I do not accept** **Print**

The Yield Book Inc.
Disclaimer
www.yieldbook.com

A member of Citi
Privacy
Terms, conditions, caveats and small print
Copyright © 1996-2007 The Yield Book Inc.

Note: After the first time you launch the Calculator, you will not see the Legal Agreement again until the software is updated.

13. On the Product Registration page, click on **Select Calculator**.

The screenshot shows the 'Yield Book Product Registration' page. At the top left is the Citi logo. Navigation links include Home, Products, About Us, News, Contact Us, Site Map, and Logout. On the right, there are links for Support and Help, and a logo for 'THE YIELD BOOK' with a book icon. The main content area says 'Thank you for registering to use Yield Book products. In the future, you will bypass the registration pages when launching an application.' Below this text is a button labeled 'Select Calculator', which is highlighted by a red arrow and the number '13'. To the right of the main content is a 'Product Selection' sidebar with buttons for 'The Yield Book', 'Batch Launcher', 'Mydata', 'Yield Book Calculator', and 'Index Data'. At the bottom of the sidebar, it shows 'Systems Status Normal'. The footer contains 'The Yield Book Inc.', a disclaimer, and copyright information.

14. On the Calculator menu page, click on the gray button for **Run** to start the default choice. You can also choose an alternate Calculator from the dropdown menu or toggles.

The screenshot shows the 'The Yield Book Calculator' page. At the top left is the Citi logo. Navigation links include Home, Products, About Us, News, Contact Us, Site Map, and Logout. On the right, there are links for Support and Help, and a logo for 'THE YIELD BOOK' with a book icon. The main content area says 'A brand new version of the Yield Book Calculator is now available. To launch the new version, you have two choices:'. Below this are two options: 'Option 1: Select from the dropdown menu under "User Summary" and click [Run]' and 'Option 2: Toggle to the "New" version under "Select Calculator License" and click [Run]'. The 'User Summary' section shows 'User Name: Jayni S Kosoff' and a 'Company: YBQA' dropdown. Below that is a table with columns 'Calculator ID', 'Calculators', 'Total', and 'In Use'. The 'Old' calculator has a total of 2 and is in use 0. Below the table is a 'Run' button, highlighted by a red arrow and the number '14'. Below the 'Run' button is the 'Select Calculator License' section, which contains a table with columns 'Yield Book Calculator ID', 'Calculator Type', and 'User & Status'. The table has two rows: 'Old' and 'New', each with radio buttons and labels.

Calculator ID	Calculator Type	User & Status
<input type="radio"/> Old	Old Calculator	Old
<input type="radio"/> New	New Calculator	New